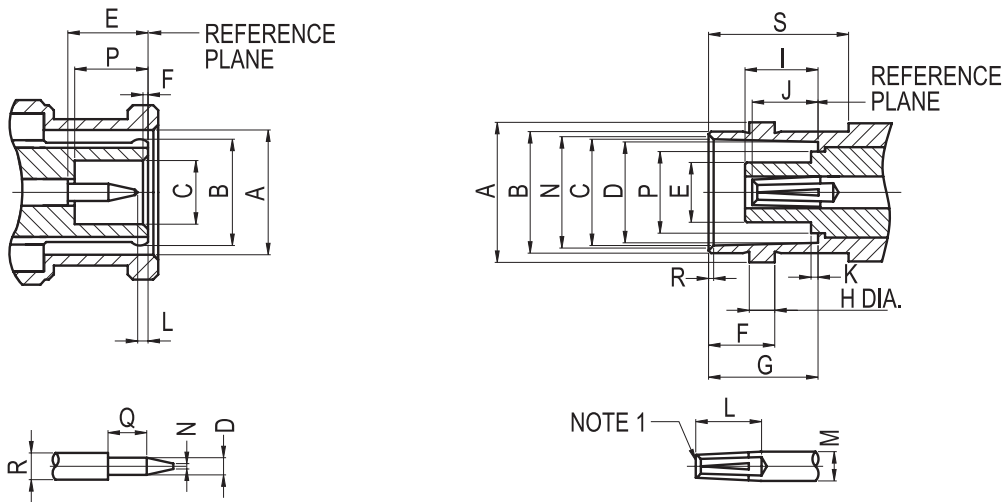


# Specifications

Electrical			Material		
Impedance	50 ohms	75 ohms	Parts Name	Material	Finish
Frequency Range	0-4GHz	0-2GHz	Metal Parts	Brass	Nickel *
Voltage Rating	500 VRMS	500 VRMS	Center Contacts	Plug: Brass	Gold*
Dielectric Withstanding Voltage	1500 Volts	1500 Volts		Jack: Phosphor Bronze or Beryllium Copper	
VSWR	1.3 max. 0-4GHz	1.3 max. 0-2GHz	Insulators	Delrin**	None
Contact Resistance	Center Contact: 3 milliohms		Clamp Gaskets	Silicone Rubber, Synthetic rubber	
	Outer Contact: 2 milliohms		Crimp Ferrules	Annealed copper	
Insulation Resistance	5000 megohms min.		*Silver plated body or contact is only available for special requirements **Unless otherwise noted as Teflon		

# Interface Mating Dimensions



**BNC SERIES**

PLUG		
Letter	Millimeters	
	Minimum	Maximum
A	9.78(.385)	9.91(.390)
B	Flared to Meet Good Elctrical Contact	
C	4.83(.190)	-
D	1.32(.052)	1.37(.054)
E	5.33(.210)	5.84(.230)
F	0.15(.006)	0.46(.018)
L	0.08(.003)	1.02(.040)
N	-	0.64(.025)
P	5.28(.208)	5.79(.228)
Q	1.98(.078)	-
R	2.06(.081)	2.21(.087)

JACK		
Letter	Millimeters	
	Minimum	Minimum
A	10.97(.432)	11.07(.436)
B	9.60(.378)	9.70(.382)
C	8.31(.327)	8.46(.333)
D	8.10(.319)	8.15(.321)
E	-	4.72(.186)
F	5.18(.204)	5.28(.208)
G	8.31(.327)	8.51(.335)
H	1.91(.075)	2.06(.081)
I	4.78(.188)	5.28(.208)
J	4.72(.186)	5.23(.206)
k	-	0.15(.006)
L	4.95(.195)	-
M	2.06(.081)	2.21(.087)
N	8.79(.346)	9.04(.356)
P	-	6.50(.256)
R	0.38(.015)	0.76(.030)
S	10.52(.414)	-

NOTE 1 : I.D. TO MEET VSWR AND CONTACT RESISTANCE WHEN MATED WITH 1.32/1.37 MM DIA. PIN.