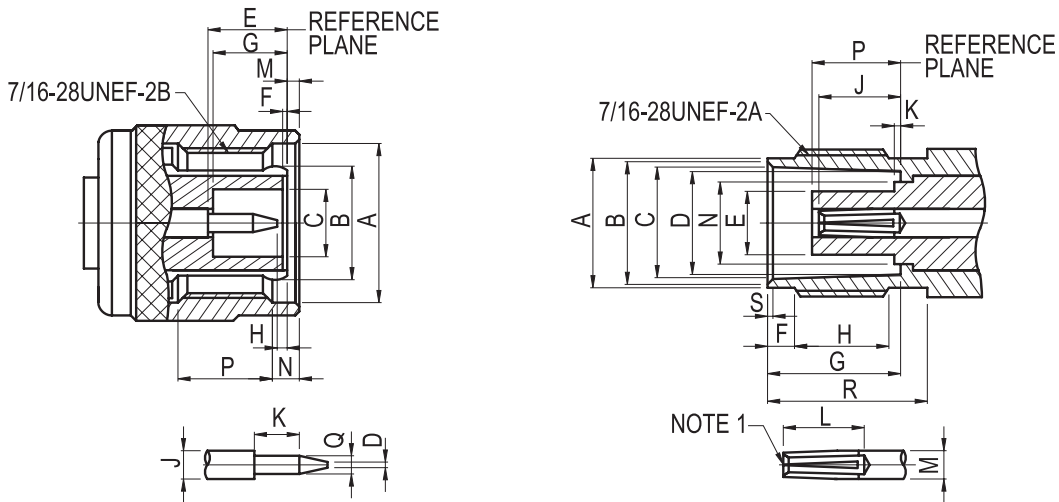


Specifications

Electrical		Material		
Impedance	50 ohm	Parts Name	Material	Finish
Frequency Range	0 - 11 GHz	Center Contact	Plug: Brass	Gold plated*
Working Voltage	500 Volts rms.		Jack: Phosphor Bronzd(nominal)or Berylium Copper	
Dielectric Withstanding Voltage	1500 Volts rms.	Metal parts	Brass	Nickel*
VSWR	Straight: 1.3 max.	Insulators	Delrin, PBT polyester**	None
	Right Angle: 1.5 max.	Clamp gaskets	Silicone rubber, Synthetic rubber	None
Contact Resistance	Center Contact: 3 milliohms	Crimp Ferrules	Annealed copper	Nickel*
	Outer Contact: 2 milliohms			
Insulation Resistance	5000 megohms min.	*Silver plated body or contact is only available for special requirements **Unless otherwise noted as Teflon		

Interface Mating Dimensions



PLUG		
Letter	Millimeters	
	Minimum	Maximum
A	11.18(.440)	-
B	FLARED TO MEET GOOD ELECTRICAL CONTACT	
C	4.83(.190)	-
D	1.32(.052)	1.37(.054)
E	5.33(.210)	5.84(.230)
F	0.15(.006)	0.46(.018)
G	5.28(.208)	5.79(.228)
H	0.08(.003)	1.02(.040)
J	2.06(.081)	2.21(.087)
K	1.98(.078)	-
M	-	1.98(.078)
N	1.60(.063)	-
P	3.96(.156)	-
Q	-	0.64(.025)

JACK		
Letter	Millimeters	
	Minimum	Minimum
A	9.60(.378)	9.70(.382)
B	8.79(.346)	9.04(.356)
C	8.31(.327)	8.46(.333)
D	8.10(.319)	8.15(.321)
E	-	4.72(.186)
F	1.73(.068)	2.24(.088)
G	8.31(.327)	8.51(.335)
H	4.75(.187)	-
J	4.72(.186)	5.23(.206)
K	-	0.15(.006)
L	4.95(.195)	-
M	2.06(.081)	2.21(.087)
N	-	6.50(.256)
P	4.78(.188)	5.28(.208)
R	10.52(.414)	-
S	0.38(.015)	0.76(.030)

NOTE 1 : I.D. TO MEET VSWR AND CONTACT RESISTANCE WHEN MATED WITH 1.32/1.37 MM DIA. PIN.