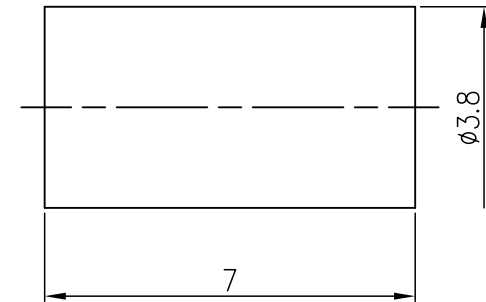
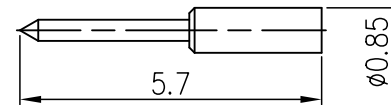
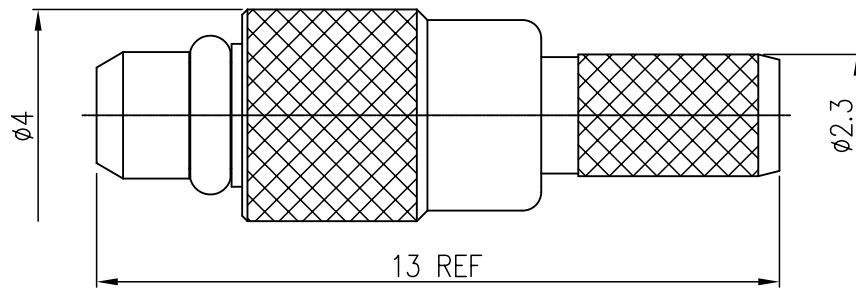



RECOMMEND CABLE STRIPPING DIM'S



NO.	DRAWING NO.	NAME	MATERIAL	FINISH	Q.TY	DIMENSIONS ARE IN MILLIMETERS UNLESS STATED OTHERWISE. TOLERANCES				SIZE	APPROVALS		DATE	TITLE	MODEL	REV.	REV.	
⑥	MB-S0024	FERRULE	C2700	Ni 100u" + Au 1u"	1	0.5-6 = ±0.2	6-30 = ±0.4	30-120 = ±0.6	120-315 = ±1	315-1000 = ±1.6	1000-2000 = ±2.4	7 : 1	DRAW	Kaven L	071210	MMCX CRIMP PLUG (FOR RG174/188A/316/U CABLE)	MMCX-S3611101R5	A
⑤	MA-S0490	CONTACT PIN	C3604	Ni 100u" + Au 3u"	1							UNIT	CHECK	River H	071210			
④	MA-S0486	CRIMP	C3604	Ni 100u" + Au 1u"	1							mm	APPROVE	River H	071210			
③	PA-S0109	INSULATOR	TEFLON	NATURAL	1							PROJECT						
②	MA-10039	WASHER	C17300	Ni 100u" + Au 1u"	1							⊕						
①	MA-S0489	BODY	C3604	Ni 100u" + Au 1u"	1							⊕						
										⊕					 <b>JY CHYUN ENTERPRISE CO.,LTD.</b> JY CHYUN			